

## A NEW NORTH AMERICAN SPECIES OF THE GENUS *CLUZOBRA* (DIPTERA: MYCETOPHILIDAE)<sup>1</sup>

Edward I. Coher<sup>2</sup>

**ABSTRACT:** The first North American species of the principally Neotropical genus *Cluzobra* is described from a short series of males and females taken in Ohio.

Twenty-nine species of the sciophiline genus *Cluzobra* have been described, all from the Neotropical Region. Matile (1996) described twenty new species and reviewed nine species described by Lane (1948, 1956, 1959, 1960) and Edwards (1934, 1940, 1941). Excluding two questionable records of females, nineteen species are known from a single country and ten from a single collection.

Only 2 species, *C. aitkeni* and *C. spinulifera* are reported as being widely distributed, although *C. binocellaris* and *C. lanei* would also fall into this category if collections from Mexico for the former and Nicaragua for the latter are confirmed by capture of males. Except for *C. lanei*, the other three species have been collected virtually year-round.

### *Cluzobra* Edwards, 1940

Type species: *Acnemia binocellaris* Edwards, 1934

Edwards, 1940. Rev. Entomol. 11:463.

Vockeroth, 1981. Agric. Canada, Monogr. No. 27:231,237.

Matile, 1996. Ann. Soc. Entomol. France (N.S.) 32(1):3-57.

*Cluzobra* has been characterized in great detail by Matile (1996). Briefly, these sciophiline flies are distinguished by wings with Sc<sub>2</sub> absent, Sc ending in C, and Cu simple.

### *Cluzobra antennulata* Coher, NEW SPECIES

**Habitus:** a moderately slim, orange-yellow fly.

**Male.** Head (Fig. 1) with vertex and occiput light red-brown, vertex light between antennae; each ocellus about its diameter from the eye with an irregular row of short setae between them; frons yellowish, narrow, 5:2 and setose; clypeus yellowish, setose; palpus brown, length of apical segment subequal to basal three segments; antenna (2+14) with scape and pedicel and first two flagellar segments cream-colored with base of darker distal segments narrowly infuscated giving antenna a ringed appearance; scape and pedicel with strong dorsal apical setae; ventral apical setae of pedicel short and stout. Thorax with mesonotum yellowish with brown acrostichal stripes from midway

<sup>1</sup> Received February 10, 1995. Accepted August 10, 1996.

<sup>2</sup> Division of Natural Sciences, Southampton College, Southampton, N.Y. 11968.

that are contiguous anteriorly with broad humeral stripes, dorsocentral stripe narrow or absent; pleura variably pigmented yellowish or brownish except katepisternite that is always darker but light ventrally; pleurotergite with a pair of long central setae; scutellum and postnotum concolorous with pleura; long scutellar setae in a row; posterior postnotum with an irregular row of large, long setae. Wing: (3.0-3.2mm); patterned, (Fig. 2); 1stA barely divergent from Cu and ending beyond fM as a line of setae; 2dA nearly obsolete, represented by a row of setae and paralleling basal posterior wing margin; fully trichiate. Halter with stem yellow, knob variously pigmented but at least partially darkened. Legs with coxae brownish, anterior forecoxa, distal 2/3 of midcoxa, lateral apical fourth of hindcoxa setose, hindcoxa with a single long basal posterior seta; femora lighter with tibiae and tarsi yellowish; tibial spurs long, foretibia with an apical comb; foretibia/forebasitarsus/ tarsus 2, 6/8/5. Abdomen orange yellow, very setiferous; TVIII (Fig. 3): SVIII (Fig. 4). Terminalia: (Fig. 5, dorsal).

**Female.** Description as for male. Terminalia: The paired cerci (fig. 6,c, lateral, setae omitted), are borne on tergite X (fig. 6, TX, dorsal,) which is bare and lightly pigmented.

**Material examined:** Holotype, male, Ohio: Pike Co., Benton Twp., 4/8/79, GA Dahlem. In the collection of Michigan St. University.

Allotype. Female. Same data as the holotype.

Paratopotypes: 1 male and 1 female.

## DISCUSSION

*C. antennulata* is most closely related to the Brazilian *brunneicauda* Matile, 1996 from which the male of the new species may be easily distinguished by the form of its dark broadly bifid internal style and lack of median dorsal styles. The shape of the female cercus is closest to that of *C. annulicornis* as figured by Matile (loc. cit.), but with the apex of the basal cercal segment distinctly narrowed in *C. antennulata*.

Vockeroth (1981), in a key to genera of the Mycetophilidae, noted a *Cluzobra* from Louisiana. Inquiries concerning this material have been to no avail; its identity cannot presently be determined. Thus, *antennulata* is the first Nearctic species of *Cluzobra* to be described.

**Biology:** Limited capture data suggest that October to February may be the peak activity period for many of the continental South American species although *aitkeni*, *binocellaris* and *spinulifera* have been collected virtually throughout the year. Nothing is known of the bionomics.

## ACKNOWLEDGMENTS

R.L. Fischer of Michigan State University made this material available for study. Annette Vollers prepared the drawings.

## LITERATURE CITED

- Edwards, F.W. 1934. New Neotropical Mycetophilidae (III). (Diptera). Rev. Entomol. 4(3):354-372. Figs. 1-5.
- Edwards, F.W. 1940. New Neotropical Mycetophilidae (IV). (Diptera). Rev. Entomol. 11 (1-2):440-465, Pls. 18-19.

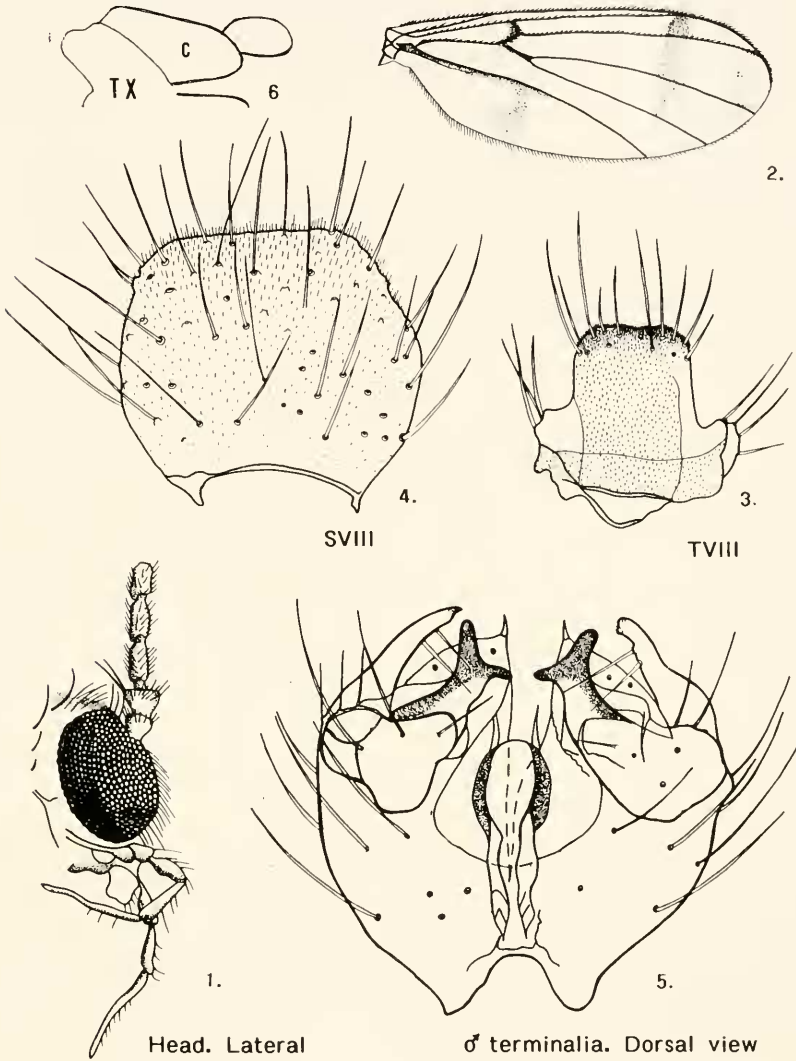
**Cluzobra**

Plate. *Cluzobra antennulata* n.sp. Fig. 1. Head, lateral view. Fig. 2. Wing. Fig. 3. Tergite VIII, male. Fig. 4. SVIII, male. Fig. 5. Male terminalia, dorsal aspect. Fig. 6. Cercus (c, lateral) and tergite X (TX, dorsal), female.

- Edwards, F.W.** 1941. Mycetophilidae (Diptera) collected by the expedition to Matto Grosso of the Brazilian Zoological Club, in July 1939. *Rev. Entomol.* 12(1-2):303-314, Pl. 15.
- Lane, J.** 1948. "Mycetophilidae" do Brasil (Diptera, Nematocera). *Rev. Brasil. Biol.* 8(2):247-254, Figs. 1-15.
- Lane, J.** 1956. New Neotropical *Sciophilinae* (Diptera: Mycetophilidae). *Dusenica* 7(3):119-124, Figs. 1-8.
- Lane, J.** 1959. Insecta Amapaensia. -Diptera: Mycetophilidae. (Second Contribution). *Studia Ent.* 2(1-4):105-118, Figs. 1-7.
- Lane, J.** 1960. Mycetophilidae from Trinidad, B.W.I. (Diptera, Nematocera). *Studia Entomol.* 3(1-4):375-384, Figs. 1-9.
- Lane, J.** 1961. Further New Neotropical Mycetophilidae. (Diptera, Nematocera). *Rev. Brasil. Entomol.* 10:1-15, Figs. 1-5.
- Matile, L.** 1996. Révision des *Cluzobra* Néotropicaux (Diptera: Mycetophilidae). *Ann. Soc. Entomol. France (N.S.)* 32:3-57, Figs. 1-75, 1 Tbl.
- Vockeroth, J.R.** 1981. *IN Manual of Nearctic Diptera* Vol. 1. Research Branch Agriculture Canada, Monograph No. 27:223-246, Figs. 1-103,